



Eastern Regional High School

1401 Laurel Oak Road • Box 2500 • Voorhees, NJ 08043-4328
 (856) 784-4441 ext. 1203, 1145, 1146 FAX (856) 627-8407
 www.eccrsd.us

Home Language Survey Form

Please complete the information below using Page 3 & 4 as a visual guide. If you have any questions or need a translated version of this form, please contact the ESL teacher, Ms. Sharon Trinidad <strinidad@eccrsd.us>.

Introduction

This survey is the first of three steps to identify whether or not a student is eligible to be an English language learner (ELL). Start with "Question 1" and continue until the HLS is complete. Select the answer for each question and follow the directions.

Student Information

Student name:

Student birth date:

Street Address:

City:

State:

Zip Code:

Phone number:

Survey Questions

Question 1

What was the first language used by the student?

A language other than English. **Proceed to question 2a.**

English. **Proceed to question 2b.**

Question 2a

At home, does the student hear or use a language other than English more than half of the time?

Yes. Proceed to question 7.

No. Proceed to question 4.

Question 2b

At home, does the student hear or use a language other than English more than half of the time?

Yes. Proceed to question 4.

No. Proceed to question 3.

Question 3

Does the student understand a language other than English?

Yes. Proceed to question 4.

No. Proceed to 9.

Question 4

When interacting with his/her parents or guardians, does the student use a language other than English more than half of the time?

Yes. Proceed to question 7.

No. Proceed to question 5.

Question 5

When interacting with caregivers other than their parents or guardians, does the student use a language other than English more than half of the time?

Yes

No

Question 6

Has the student recently moved from another school district/charter school where he/she was identified as an English language learner?

Yes

No

Question 7. What are the home languages spoken?

***Once completed, please contact
Ms. Sharon Trinidad at strinidad@eccrsd.us
to arrange the submission and review of this form for ELL services.***

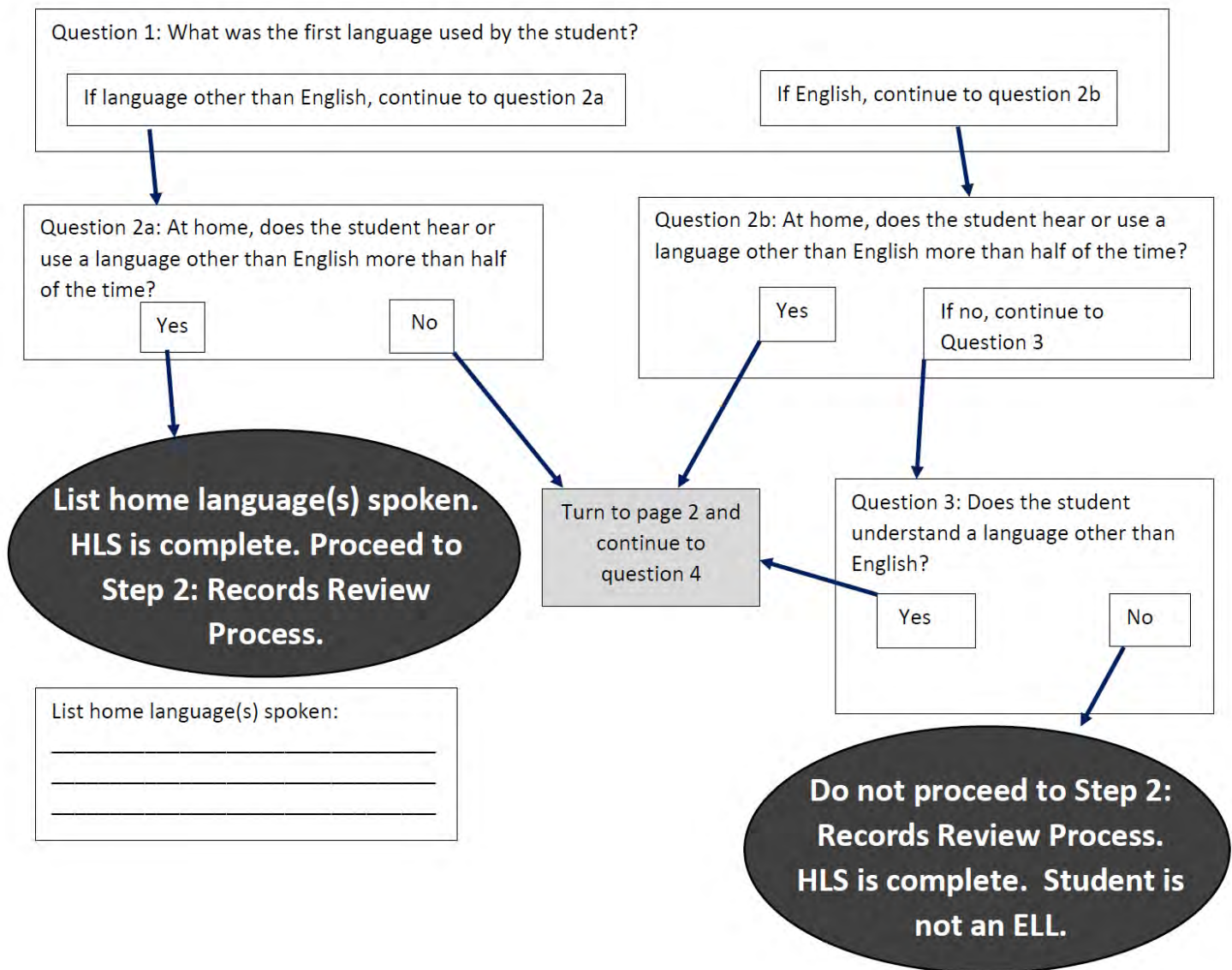
ELL Identification Step 1: New Jersey Home-Language Survey (HLS)

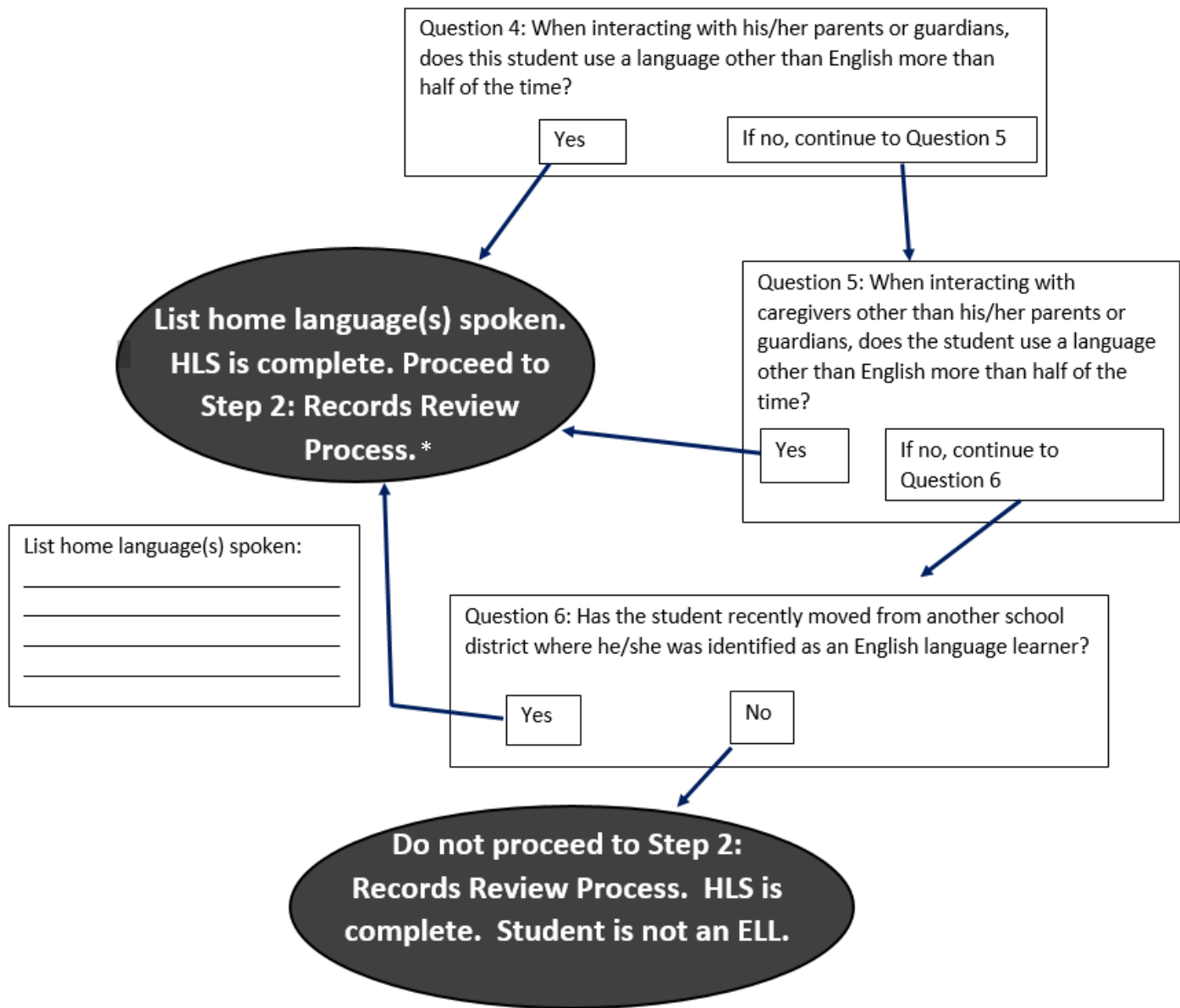
Purpose

This survey is the first of three steps to identify whether a student is eligible to be identified as an English language learner (ELL).

Instructions

Start with "Question 1" and continue until the HLS is complete. Circle the answer for each question and follow the directions. **When you arrive at a decision ("Proceed to Records Review Process" or "Do not proceed to Records Review Process"), the Home-Language Survey is complete.**





***STEP 2 NOTE:** A New Jersey certified teacher must screen all students whose home language is other than English using a records review process referencing ESSA ELL Entry and Exit Guidance, p.4. The screening process must distinguish students who are proficient in English and need no further testing. Three indicators are used for this determination.

To translate the survey, go to: <https://www.nj.gov/education/bilingual/>